

# SOUND IMAGES



inakustik

KABEL | LAUTSPRECHER | MUSIK


## THE KEY TO OUR SUCCESS








Of course, we were not the ones to invent cable. But we are really rather proud of having made the best out of it. Seriously though, it is not easy to find a better cable that transmits sound signals clearer, more precisely and purer than, for instance, our LS-A1.

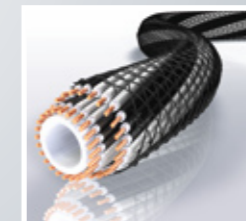
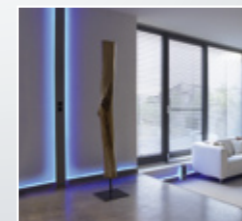
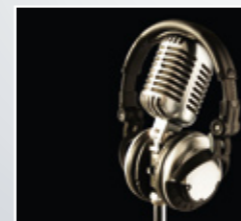
The passion and love we have invested in developing and producing this cable also extends to all our other products. No wonder, because it is also the basis on which we took

up the fight against the mediocrity of sound and picture transmission when we first started at in-akustik more than 30 years ago now.

Since then we have achieved a lot. Not just for the connoisseurs of sound and pictures but also for all those who are tired of mediocrity. Outstanding quality with excellent value for money is what makes in-akustik attractive for everyone.



HOME VIDEO 	6	74 	INSTALLATION
SPEAKER CABLE 	32	86 	MULTIMEDIA
HOME HIFI 	52	90 	CAR HIFI
POWER SUPPLY 	68	96	TV CABLE CHANNEL   TV WALL BRACKET
		97	MUSIC & MEDIA
		98	PRODUCT OVERVIEW

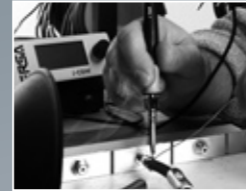


### IN-AKUSTIK – FOR THE SENSES.

in-akustik has been committed to pure sound and sharp pictures for more than 30 years. With our CD and DVD labels, as well as with our own cables. AmbienTech speaker walls, cable runs and the LED light concept are our latest developments which interpret sound and vision as a living concept. For more information, go to [www.in-akustik.de](http://www.in-akustik.de)

## MADE IN GERMANY

The key to our success? The origin of our cable? That is the production of our speaker cables in our very own cable plant. In Germany. And the assembling most of our Reference and Excellence cables here in our plant: in Ballrechten-Dottingen. Quality – made in Germany.



## QUALITY LEVELS

First-rate materials, optimum performance – our products offer all this. And that is also reflected in the quality. There is always a little bit more with each level.

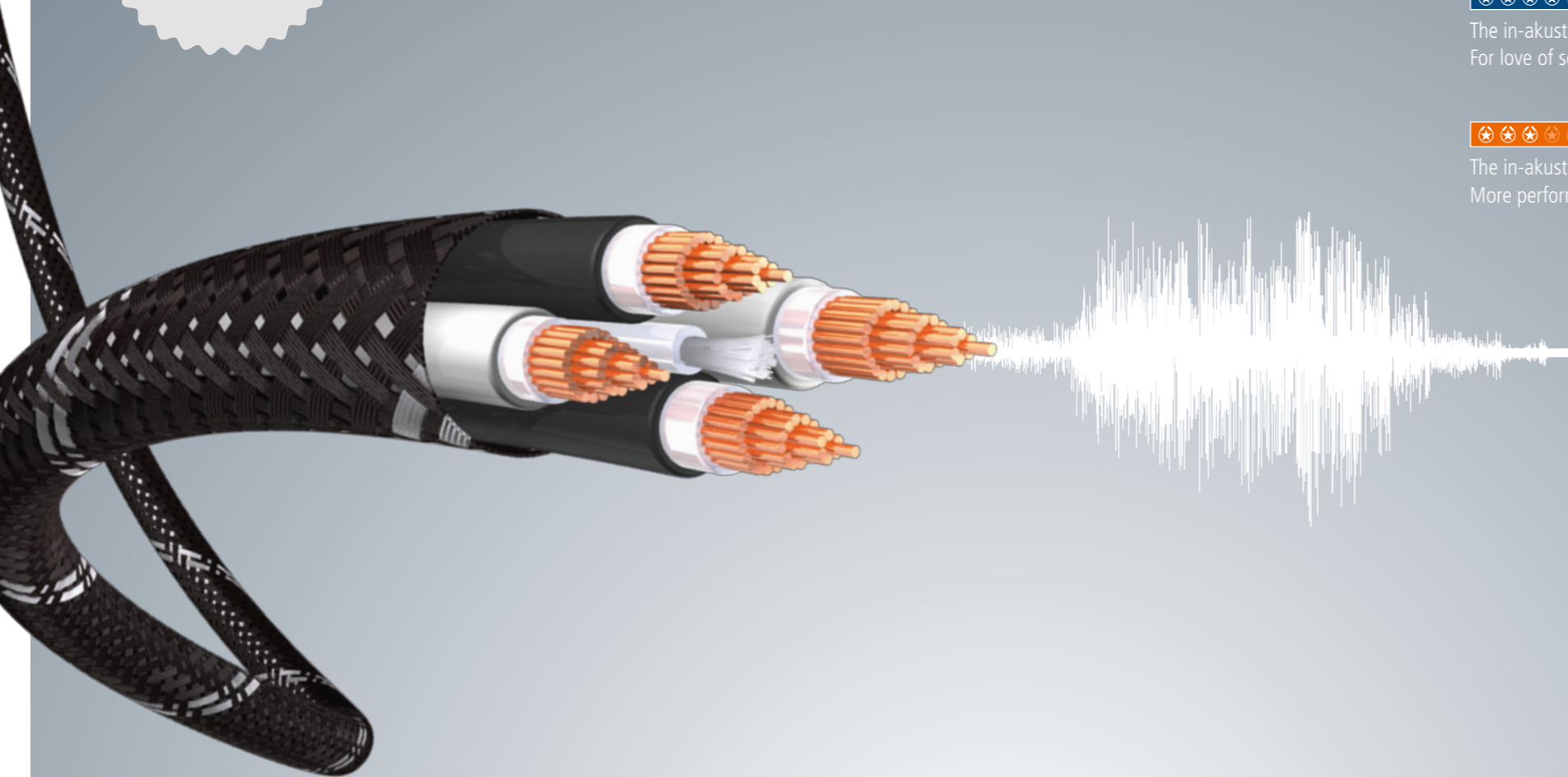
From Star to Premium and Excellence to our ne plus ultra from the Reference class which is a standard for all others, we have finer, more sophisticated and intricate cable technology for every level. What do you get? More sound. More sharpness. Noticeably more passion. And above all, more pleasure.

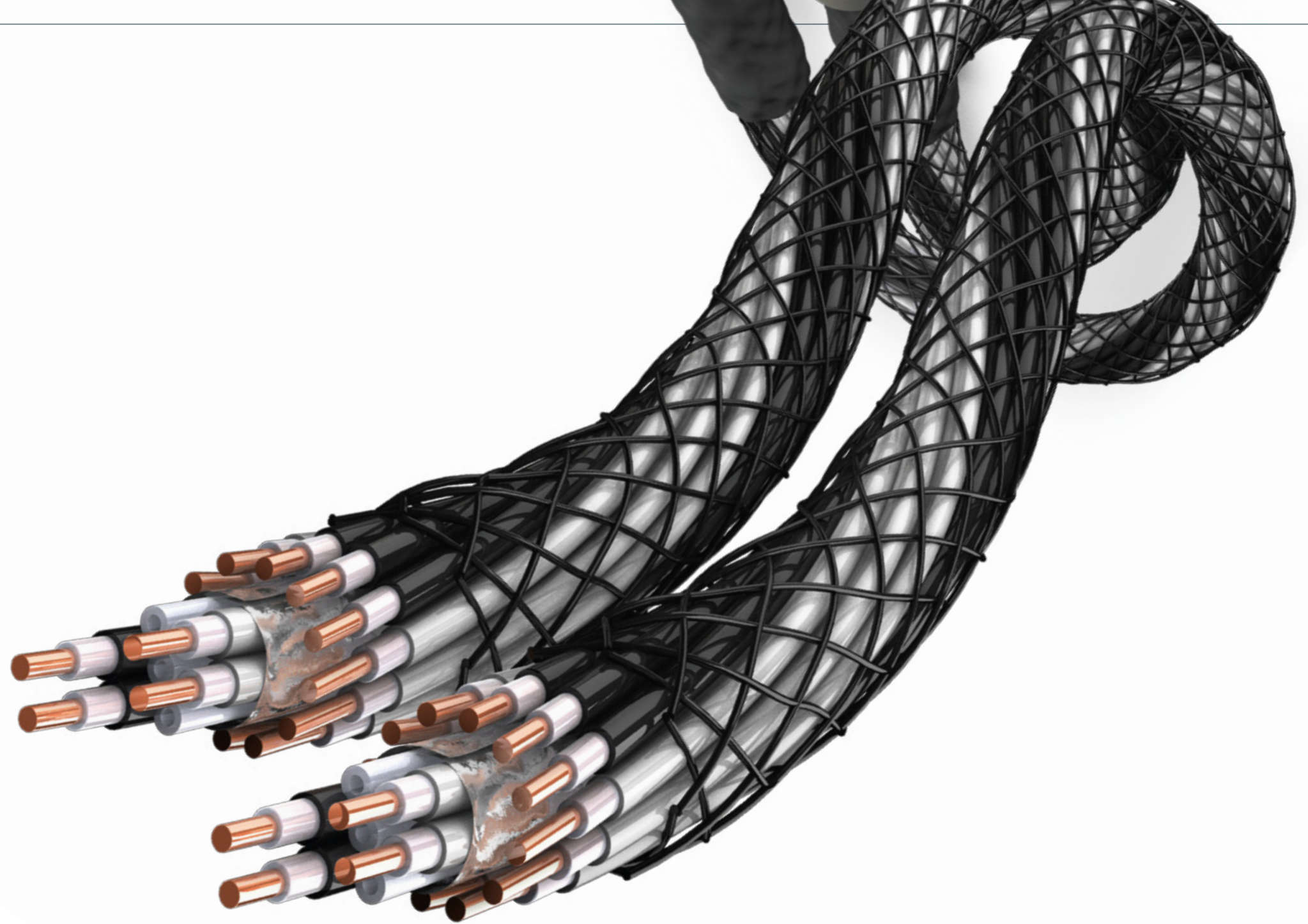
**★★★★★** REFERENCE – THE BENCHMARK FOR PICTURE AND SOUND – SIMPLY CAN'T BEAT IT!  
The in-akustik class for perfectionists. The benchmark for an uncompromising sound and picture experience. World-wide leader in price-performance ratio. Goes right under your skin.

**★★★★☆** EXCELLENCE – FOR THE LOVERS OF PERFECT PICTURE AND SOUND EXPERIENCES.  
The in-akustik class for upmarket demands. Selected materials, the best workmanship. With passion, for high-end sound and picture enjoyment.

**★★★★☆** PREMIUM – PICTURE AND SOUND FOR ADVANCED USERS.  
The in-akustik class for finest technology. Extracts the best from the hi-fi system. For love of sound and picture performance.

**★★★★☆** STAR – THE BEST GATEWAY TO THE WORLD OF PICTURE AND SOUND.  
The in-akustik class for aspiring beginners. Always suitable. More performance for low prices. A necessity for luxury of sound and picture.





## HOME HIFI

Playback devices such as CD, DVD or Blu-ray players only emit weak signals. Electro-magnetic interaction can easily derail these sensitive signals. This applies to audio cables as well as digital cables.

Those who appreciate good sound make sure they have the right cable. Even the best device will deliver bad quality with the wrong cables. Cables are the most important source of interference. Unless they are made by in-akustik.

The cables from in-akustik help the fine impulses to reach the amplifier unaltered. With a sophisticated design and dense screening. To make sure that every tone arrives.

- AUDIO CABLE
- MP3 AUDIO CABLE
- DIGITAL CABLE COAX
- DIGITAL CABLE OPTO
- ACCESSORIES

54  
60  
61  
62  
64

## ■ NF-A1

The Reference NF-A1 is an active audio cable. It has tubes which convert the usual weaknesses of sterile digital technology with significantly higher transparency and wider spatial sound distribution into harmonious sound. The inbuilt electronics enable the inputs and outputs in the device to adjust to the impedance of the cable. And the NF-A1 can drive even long cable lengths effortlessly thanks to the powerful output levels.

**STEREO** "Goodbye cable problems... this active cable outperforms the passive version, though it was also very good, as it sounds even more colourful and powerful. Quite evidently: "A door to paradise!" ... active NF conjures a fascinating experience from the timbre spectrum of music."

### KEY FEATURES

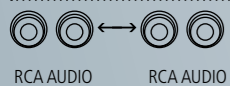
- ⊕ Electronic impedance adjustment
- ⊕ Pleasant tube sound
- ⊕ Extremely high input resistance
- ⊕ Class A output level
- ⊕ Terminator resistor in the plug
- ⊕ Cable: NF-1302 (for more details, see page 51)



### ADDITIONAL PRODUCT DATA

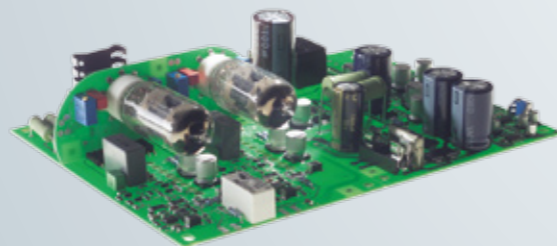
- Large bandwidth (160 kHz)
- Large dynamic scope (> 140 dB)
- Optimally adjusted output
- Length: 1.5 m; special connections on request
- Includes electronics 230 V or 100 V + 1.5 m mains cable

### CONNECTIONS



### TECHNOLOGY

The electronics in the NF-A1 active audio cable are exactly adapted to the cable. They carefully scan the signal at the source and ensure an output full of sound. The result: reflections are absorbed, the sound spectrum is extended.

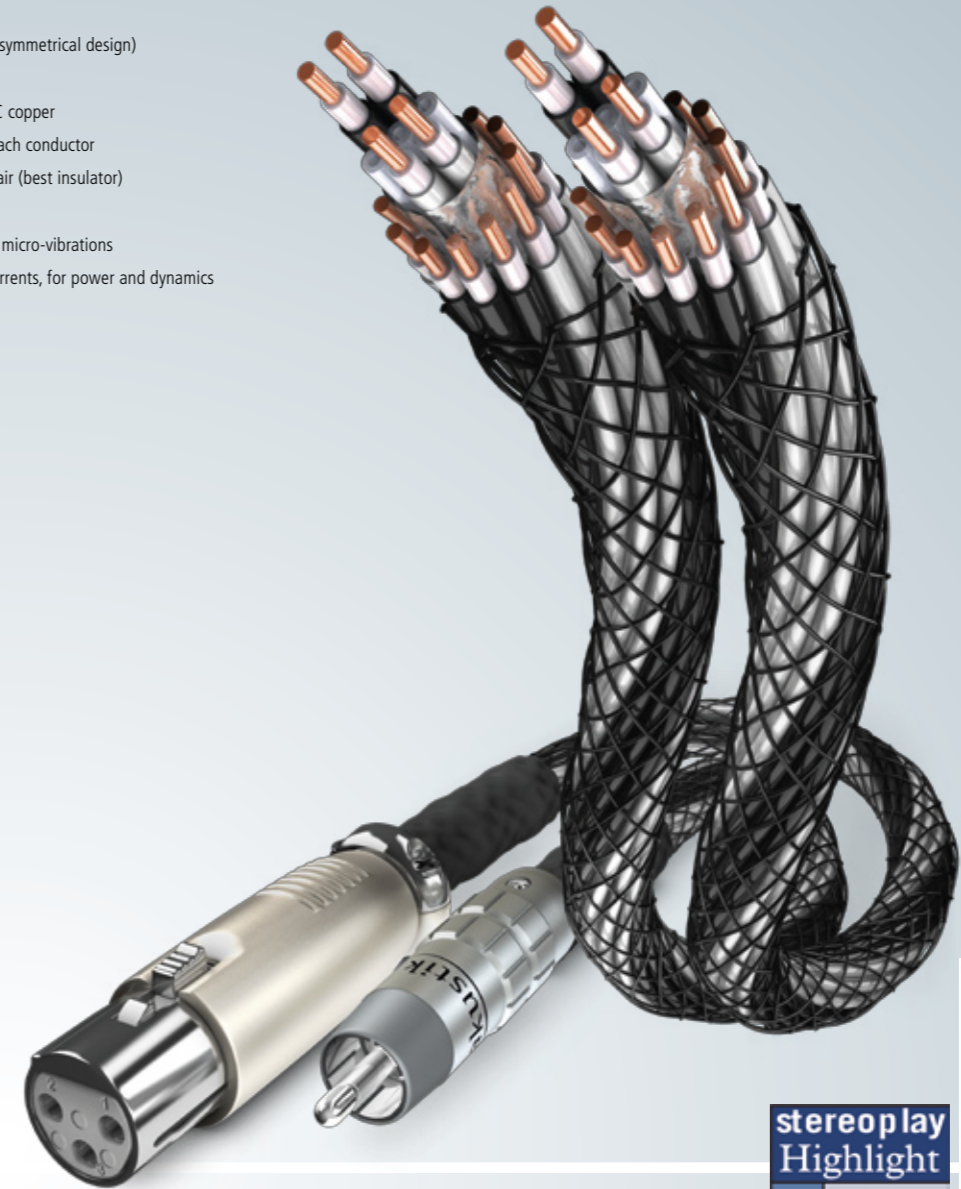


## ■ NF-1302

The sleeve of our LS-1302 speaker cable had such a positive effect on the sound that we also gave the NF-1202 audio cable new cladding and then launched it as Reference NF-1302 with PE network jacket. With great success: independent laboratory and audio tests certify our reliable sound cable has extraordinary properties from the very start. With outstanding power, dynamics and precision.

### KEY FEATURES

- ⊕ Four solid conductors (double-symmetrical design) for harmonious transit times
- ⊕ Wires made of high-purity OFC copper
- ⊕ DUO-PE II insulation around each conductor
- ⊕ Polyethylene tubes filled with air (best insulator) against unwanted capacitance
- ⊕ The PE network jacket against micro-vibrations
- ⊕ GAP shielding against eddy currents, for power and dynamics



### ADDITIONAL PRODUCT DATA

- Lengths: 0.6 m; 1.2 m; special connections on request
- Cable diameter: 9.5 mm
- Fitted with XLR plugs or the Reference GAP RCA

### CONNECTIONS



### RECOMMENDED PLUGS

- Premium XLR plug (p. 64)
- Reference GAP RCA (p. 64)

### GAP SHIELDING

The coaxial standard shielding of conventional audio cables function like short-circuited secondary circuits. Eddy currents could occur and alter the music signal. The dynamics are diminished and the hi-fi system sounds flat. The newly-developed GAP shielding is not closed radially. It is slit and therefore does not create unwanted secondary circuits. Nor does the signal get overlaid by "reflected" induction currents. All the power and dynamics of the music remain intact.



10/2007



## NF-202

Precisely because audio signals are so sensitive, we have equipped our Reference NF-202 audio cable with some highly-effective technology: optimum DUO-PE II insulation with air-filled PE tubes, an innovative GAP plug, but also in particular an extremely sophisticated, solid conductor made of high-purity OFC copper, which all ensure uniform transit times and crystal-clear signal transmission. The earth and signal conductors are the same size and arranged symmetrically. The PE network jacket prevents micro-vibrations.

**AUDIO** "The unobtrusive, clean sound of this cable fared extremely well in the blind tests. Without exception, every listener described the cable as pleasant, powerful and quiet, and that it had stable reproduction characteristics; a superior sound conductor."

### KEY FEATURES

- ⊗ Symmetrical design (two solid conductors)
- ⊗ The PE network jacket against micro-vibrations
- ⊗ Wires made of high-purity OFC copper
- ⊗ Foil shielding and weave sleeve made of OFC copper
- ⊗ DUO-PE II insulation around each conductor
- ⊗ Polyethylene tubes filled with air (best insulator) reduce unwanted capacitance



### ADDITIONAL PRODUCT DATA

- Lengths: 0.6 m; 1.2 m; special connections on request
- Cable diameter: 7.2 mm
- Fitted with the Reference GAP RCA

### RECOMMENDED PLUGS

- Reference GAP RCA (p. 64)

### CONNECTIONS



## NF-102

The Reference NF-102 consists of solid, high-purity OFC copper which is covered with DUO-PE II insulation. The PE tubes filled with air, an innovative GAP plug, the exact arrangement of all elements, in particular the very sophisticated centrally-located, solid signal conductor all ensure uniform transit times. The PE network jacket prevents micro-vibrations.

**AUDIO** "As a speaker connection, the Reference series from in-akustik has long been a hit, having put the audio cable in its shadow. However, now the NF-102 counts among those which put others in the shadows. ... the sound remains free of harshness of any sort. In fact, the clarity, contour and the effortless resolution were all pleasing - a real all-round cable."

### KEY FEATURES

- ⊗ Coaxial design (central solid signal)
- ⊗ The PE network jacket against micro-vibrations
- ⊗ Wires made of high-purity OFC copper
- ⊗ Foil shielding
- ⊗ DUO-PE II insulation around each conductor
- ⊗ Polyethylene tubes filled with air (best insulator) against unwanted capacitance



### ADDITIONAL PRODUCT DATA

- Lengths: 0.6 m; 1.2 m; special connections on request
- Cable diameter: 5.8 mm
- Fitted with the Reference GAP RCA

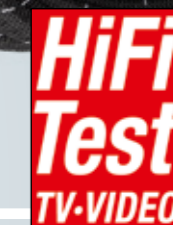
### RECOMMENDED PLUGS

- Reference GAP RCA (p. 64)

### CONNECTIONS



06/2005



Top class  
Price/performance:  
very good

05/2004

### AUDIO CABLE

The Excellence audio cable creates brilliant reproduction with its silver-plated signal conductors. The symmetrical design, the foil shielding and the additional earth conductor ensure the highest level of immunity from interference. The double mono design ensures optimum channel separation and excellent electronic properties.

#### KEY FEATURES

- ⊕ Solid metal plugs
- ⊕ Symmetrical design (two signal conductors)
- ⊕ Silver-plated OFC copper conductor for optimum treble reproduction
- ⊕ 24c gold-plated contacts
- ⊕ Aluminium foil shielding and additional earth conductor

### AUDIO CABLE

The Premium audio cable is impressive with its high copper content for powerful sound. The double shielding protects against interference. The double mono structure ensures optimal channel separation and better electronic properties.

#### KEY FEATURES

- ⊕ Conductors made of high-purity OFC copper
- ⊕ Solid metal plugs
- ⊕ Double shielding
- ⊕ 24c gold-plated contacts

### AUDIO CABLE

The Star audio cable reduces sound loss with its dense shielding and thick inner conductor. The 24c gold-plated metal plugs preserve quality at the connections.

#### KEY FEATURES

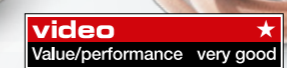
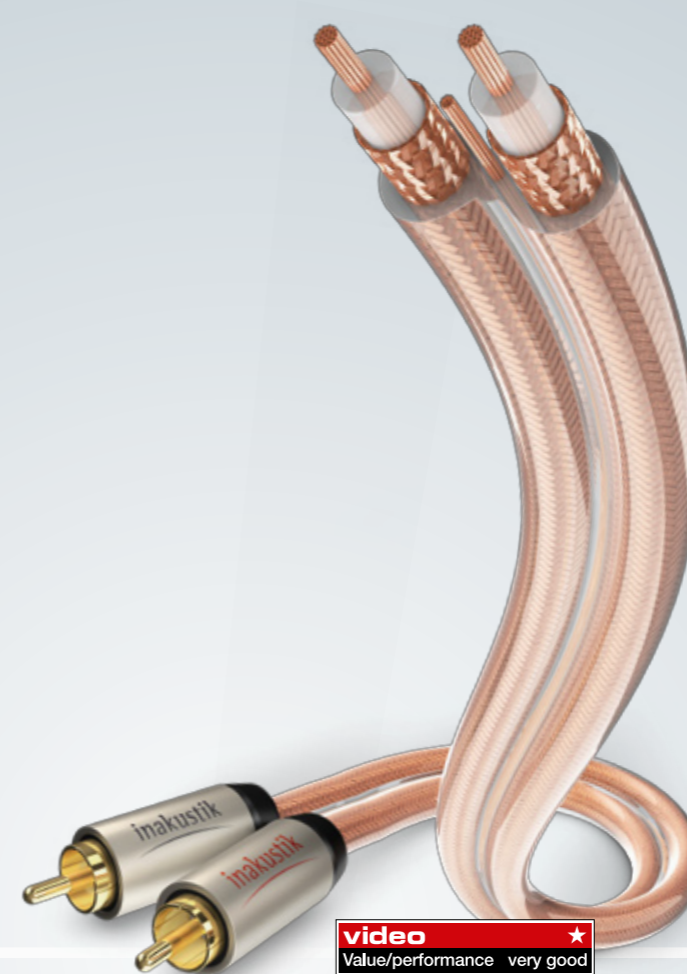
- ⊕ Dense shielding
- ⊕ 24c gold-plated contacts
- ⊕ Conductors made of high-purity OFC copper

### INTERCONNECT AUDIO CABLE

Universal stereo audio cable for special lengths and room/studio installations.

#### KEY FEATURES

- ⊕ Dense shielding
- ⊕ Conductors made of high-purity OFC copper
- ⊕ Flexible



#### ADDITIONAL PRODUCT DATA

- Lengths: 0.75 m–3.0 m
- Subwoofer cable lengths: 2.0 m–15.0 m
- Cable diameter: 8.0 mm
- Colour: anthracite

#### RECOMMENDED PLUGS

- Excellence RCA (p. 64)
- Premium XLR plug (p.64)

#### CONNECTIONS



#### ADDITIONAL PRODUCT DATA

- Lengths: 0.7 m–5.0 m
- Subwoofer cable lengths: 2.0 m–15.0 m
- Cable diameter: 6.0 mm
- Colour: blue

#### RECOMMENDED PLUGS

- Premium RCA 6.2 (p. 64)

#### CONNECTIONS



#### ADDITIONAL PRODUCT DATA

- Lengths: 0.75 m – 5.0 m
- Subwoofer cable lengths: 2.0 m–12.0 m
- Cable diameter: 2 x 6.0 mm
- Colour: transparent
- Additional earth/remote cable

#### RECOMMENDED PLUGS

- Star RCA (p. 65)

#### CONNECTIONS



#### ADDITIONAL PRODUCT DATA

- Cable diameter: 2 x 6.0 mm
- Colour: blue; black

#### RECOMMENDED PLUGS

- Star RCA (p. 65)

#### APPLICATION



#### CONNECTIONS



### MP3 AUDIO CABLE

Double-shielded MP3 audio cable with rich-in-sound solid conductors for connecting an MP3 player (iPod), a laptop or PC to an amplifier or AV receiver.

#### KEY FEATURES

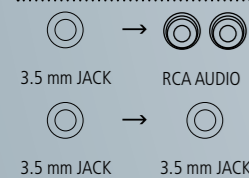
- ⊗ Double shielding
- ⊗ Solid conductors
- ⊗ In fashionable white and blue
- ⊗ 24c gold-plated contacts



#### ADDITIONAL PRODUCT DATA

- Lengths: 1.5 m–10.0 m
- Colours: white, blue

#### CONNECTIONS



### MP3 AUDIO CABLE

The Star MP3 audio cable for connecting MP3 players (iPods), laptops or PCs to an amplifier, AV receiver or car radio with RCA jacks sockets.

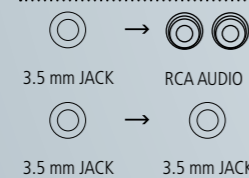
#### KEY FEATURES

- ⊗ Mini 3.5 mm stereo phone plug
- ⊗ Foil shielding
- ⊗ 24c gold-plated contacts

#### ADDITIONAL PRODUCT DATA

- Lengths: 0.5 m–10.0 m
- Colour: white

#### CONNECTIONS



### MP3 AUDIO ADAPTER

The Star MP3 audio adapter for connecting two headphones to an MP3 player (iPod) or PC. Due to its short cable the mechanical power is reduced on the jack of the device.

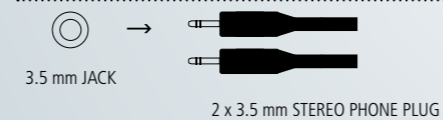
#### KEY FEATURES

- ⊗ Conductors made of high-purity OFC copper
- ⊗ Foil shielding
- ⊗ 24c gold-plated contacts

#### ADDITIONAL PRODUCT DATA

- Length: 10 cm
- Colour: white

#### CONNECTIONS



### ON/OFF-202

In normal coaxial digital cables, the shielding is also used for the return signal. The Reference On/Off-202 digital cable has a separate conductor for the return signal and also has a double shielding. The twisted pair design ensures extremely large data rates with low jitter. The cable exactly maintains a specified characteristic impedance of 75 ohms, keeping inductance and capacitance in perfect balance.

#### KEY FEATURES

- ⊗ Silver-plated solid conductor for a high bandwidth
- ⊗ DUO-PE II insulation around each conductor
- ⊗ Twisted pair technology: twisted conductor and return conductor for higher data rates
- ⊗ Fitted with low-loss GAP RCA plugs
- ⊗ Double shielding (Foil and braid shielding)
- ⊗ Separately-guided return conductor. The shielding is signal-free

#### ADDITIONAL PRODUCT DATA

- Lengths: 0.6 m; 1.2 m;
- Fitted with the GAP RCA
- Special connections on request
- Cable diameter: 5.5 mm
- PE network jacket against micro-vibrations
- 75 Ohm impedance

#### CONNECTIONS



#### RECOMMENDED PLUGS

- Reference GAP RCA (p. 64)

### DIGITAL CABLE

The Excellence digital cable reduces the jitter effect with an impedance of exactly 75 Ohm and its silver-plated signal and earth conductors. The dynamic reproduction with precise spatial effects is impressive. The new Excellence plug is crimped on the cable (not soldered) and ensures stable contacts.

#### KEY FEATURES

- ⊗ Solid metal plugs
- ⊗ 24c gold-plated contacts
- ⊗ Silver-plated signal and earth conductor
- ⊗ Conductors made of high-purity OFC copper
- ⊗ Aluminium foil shielding

#### ADDITIONAL PRODUCT DATA

- Lengths: 0.75 m–3.0 m
- Colour: anthracite
- Cable diameter: 8.0 mm
- 75 Ohm impedance

#### CONNECTIONS



#### RECOMMENDED PLUGS

- Excellence RCA (p. 64)





### VIDEO-/DIGITAL CABLE

The Premium video/digital cable is fitted with a solid inner conductor and double shielding and delivers a low-loss data transmission, for instance between a DVD player and AV receiver.

**KEY FEATURES**

- 24c gold-plated contacts
- Solid conductors
- Conductors made of high-purity OFC copper
- Double shielding

### OPTO CABLE OP-102

The optical digital cable consists of high-quality nylon fiber and has precisely fitting solid metal plugs. Ideal for connecting digital audio sources such as CD, DVD, Blu-ray players or game consoles to AV receivers, etc.

**KEY FEATURES**

- Precisely fitting solid metal conductor
- Nylon fiber
- Reduced jitter
- 4-fold protection
- Dust cover
- PE network jacket

### OPTO CABLE

The Premium Opto cable consists of high-quality nylon fiber and precisely fitting Toslink plug. For connecting digital audio sources such as CD, DVD, Blu-ray players or game consoles to AV receivers, etc.

**KEY FEATURES**

- Precisely fitting Toslink plug
- Nylon fiber
- Flexible
- High optical-fibre efficiency

### OPTO CABLE | MINI PLUG

The optical digital cable with standardised Toslink plugs for connecting digital audio sources such as CD, DVD, Blu-ray players or game consoles to AV receivers, etc.

**KEY FEATURES**

- Precisely fitting Toslink plug
- Plastic fibre
- Flexible

### OPTO SPLITTER

The Premium Toslink splitter distributes two optical outputs to one input and vice versa. For instance, if the AV receiver only has one optical input but needs to be connected to a CD player as well as a DVD player with optical output.

### CONVERTER

Converter for adjusting devices with optical digital outputs to devices with coaxial input or vice versa. For instance, this allows a DVD player with an optical output to be connected to the coaxial input of an AV receiver.



**ADDITIONAL PRODUCT DATA**

- Lengths: 1.0 m–10.0 m
- Cable diameter: 6.0 mm
- Colour: blue
- 75 Ohm impedance

**APPLICATION**



**RECOMMENDED PLUGS**

- Premium RCA (p. 64)

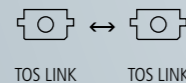
**CONNECTIONS**



**ADDITIONAL PRODUCT DATA**

- Lengths: 1.0 m–15.0 m
- Colour: black
- Cable diameter: 8.0 mm

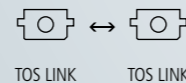
**CONNECTIONS**



**ADDITIONAL PRODUCT DATA**

- Lengths: 1.0 m–10.0 m
- Colour: blue
- Cable diameter: 6.0 mm

**CONNECTIONS**



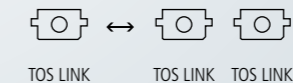
**ADDITIONAL PRODUCT DATA**

- Lengths: 0.75 m–3.0 m
- Colour: black

**CONNECTIONS**



**CONNECTIONS**



**CONNECTIONS**



### ■ GAP RCA

The Reference GAP RCA is a high-end RCA plug with a balanced mass ratio of pin and ground ring. It is extremely low in capacitance and has an extremely durable rhodium lining and a "non-magnetic housing".

- Cable extension: 10.5 mm; 8.2 mm; 7.2 mm
- Solid metal plug
- Grey/black coding
- Rhodium-coated



### ■ RCA

The Excellence RCA plug is an elegant shape with unique technology. It can be crimped as well as soldered. This is possible due to an additional earth contact and the use of special materials.

- Cable extension: 8.0 mm
- Colour coding: red, black, yellow, green, blue
- Solid metal plug
- 24c gold-plated contacts



### ■ RCA "TWIST-ON"

RCA plug for easy plug&play assembly. Suitable for connecting e.g. video and digital cables in individual lengths or for installing in empty conduits etc.

- 24c gold-plated contacts
- Easy twist-on assembly
- Cable extension: 7.0 mm
- Solid metal plug



### ■ RCA F- AND Y-ADAPTER

The Premium RCA F and Y adapters enable a signal to be split to two audio cables. The adapters are 24c duplex gold-plated and are colour-coded for the left and right ducts.

- Red/black coding



### ■ RCA ANGLE ADAPTER

The 24c duplex gold-plated Premium RCA angle adapter prevents kinks for space-saving cable connections. Cable damage and tangling can be avoided.

- Red/black coding



### ■ RCA DUAL COUPLING

The 24c duplex gold-plated Premium RCA dual coupling for extending audio cables.

- Red/black coding

#### APPLICATION



### ■ RCA 6.2

Modern, elegant solid metal RCA plug with gold-plated contacts. It is chrome-plated with red/white coding.

- Cable extension: 6.2 mm
- Solid metal plug
- Red/white coding
- 24c gold-plated



### ■ RCA

The colour-coded RCA plug has a solid ground ring for a secure grip, kink protection and strain relief, as well as 24c duplex gold-plating and Teflon insulation.

- Cable extension: 8.0 mm; 6.0 mm; 5.0 mm
- Solid metal plug
- Red/white coding
- 24c gold-plated



### ■ XLR

Solid XLR plug/coupling for perfectly symmetrical connections.

- Cable extension: 8.0 mm; without nozzle 10.0 mm
- Solid metal plug



### ■ RCA

The 24c duplex gold-plated standard RCA plug is colour-coded, kink protection and strain relief.

- Cable extension: 8.0 mm; 6.0 mm
- Solid metal plug
- Red/black coding
- 24c gold-plated



### ■ RCA PANEL JACK

The 24c duplex gold-plated RCA panel jack in hexagonal design with Teflon insulation. Includes insulation discs, nut and soldering lug.

- Red/black coding



### ■ RCA JACK ADAPTER

Solid, gold-plated 3.5 mm stereo phone plug adapter with two RCA jacks (left & right).



#### APPLICATION



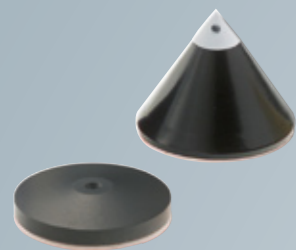
#### APPLICATION



### ■ PIC 40 & PLATE 40

The solid sub-frequency absorber for linking devices and speakers to one place and reducing vibration. It can be adjusted and has adhesive pads. Plate 40 is a correctly-sized disc for protecting the surface of where the device stands.

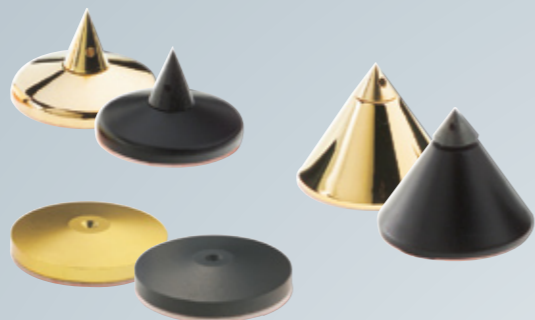
- Model: black
- Pic: 36 x 30 mm (D x H)
- Plate: 30 x 5 mm (D x H)



### ■ MAXI PIC & PLATE

The solid sub-frequency absorber for linking devices and speakers to one place and reducing vibration. They are adjustable with adhesive pads as well as protective discs for sensitive surfaces.

- Model: black or gold-plating
- Pic absorber cone: 36 x 30 mm (D x H)
- Pic absorber pointed cone: 36 x 24 mm (D x H)
- Pic underlay: 30 x 5 mm (D x H)



### ■ BOLIDE SCHOCKABSORBER

The Excellence bolide shock absorber consists of a special rubber compound and a sophisticated fin design for optimum damping of vibration between the devices and the standing position.

- Model: chrome or gold-plating
- Withstands up to 50 kg/set of 4



### ■ DOUBLETTE

The Premium Doublette in sandwich design consists of metal discs and special rubber for optimum vibration damping between the devices and the standing position.

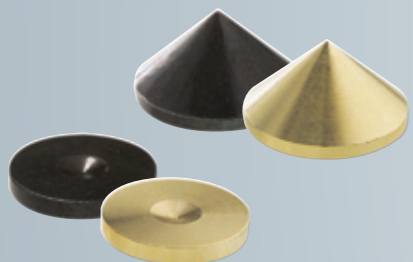
- Model: chrome or gold-plating
- Diameter: 5.5 cm; 3.0 cm
- Withstands up to 20 kg/set of 4



### ■ MINI PIC & PLATE

The simple sub-frequency absorber for linking devices and speakers to one place. Reduced vibrations.

- Model: black, brass or gold-plating (pics)  
black, brass or chrome (plates)
- Pic absorber cone: 20 x 10 mm (D x H)
- Pic underlay: 17 x 3 mm (D x H)



### ■ MINI ABSORBER

The sub-absorber made from a special rubber compound for optimum damping of vibration between the devices and the standing position.

- Model: chrome
- Diameter: 4.0 cm
- Withstands up to 8 kg/set of 4

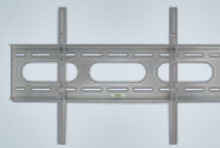


TV CABLE CHANNEL & LED LIGHT KIT

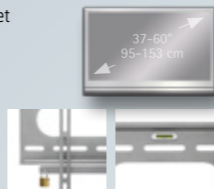
Flat screens are captivating with their simple designs and clear lines. They fit perfectly into a living room ambience. If it weren't for the cables hanging on the wall. An inconspicuous and visually pleasing solution to this problem is the AmbienTrack TV cable channel from in-akustik.



AMBIENTECH TV WALL BRACKET NO. 1

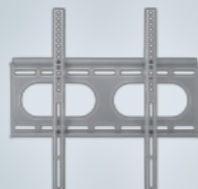


- Universal plasma/LCD wall bracket
- Fulfills the VESA standard
- TV size: 37 – 60"/95 – 153 cm
- TV weight: 75 kg/165 lbs
- With spirit level
- Lockable
- Super flat design
- Incl. installation instructions
- Incl. installation kit
- Plug & Play installation



75 kg  
165 lbs

AMBIENTECH TV WALL BRACKET NO. 2



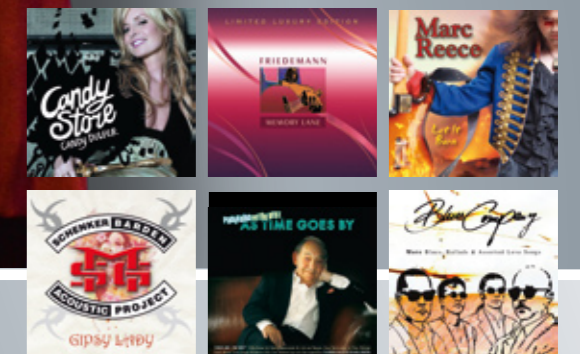
- Universal plasma/LCD wall bracket
- Fulfills the VESA standard
- TV size: 23 – 37"/59 – 95 cm
- TV weight: 50 kg/110 lbs
- Lockable
- Super flat design
- Incl. installation instructions
- Incl. installation kit
- Plug & Play installation



50 kg  
110 lbs



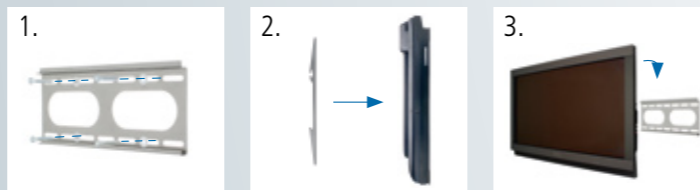
YOU CAN FIND THESE AND MORE THAN 4000 OTHER TRACKS IN OUR RANGE:



ADDITIONAL COLOUR VARIATIONS



PLUG & PLAY INSTALLATION



MUSIC AND MEDIA

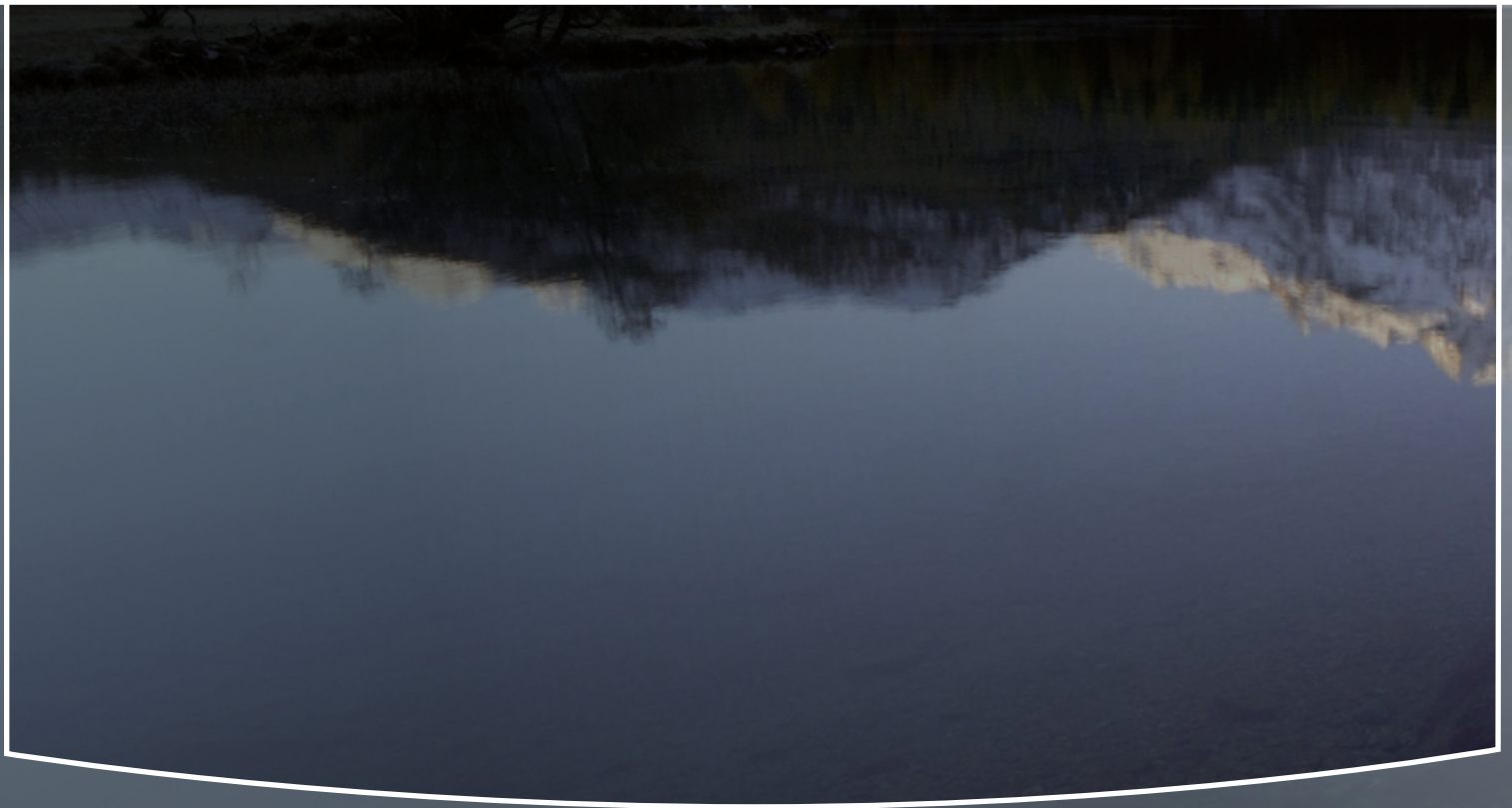
Whether it is jazz, blues, singer/songwriter, rock, pop or classical – we have it all. Everything? Well, not quite everything. But a bit of everything: an exquisite selection of outstanding composers, singers and bands. Studio and live recordings that make your ear drums tremor and your emotions run wild or a popular cult series from the television. To watch and listen to on CD, DVD, Blu-ray, LP or SACD.

Visit our website at [www.in-akustik.de](http://www.in-akustik.de)









in-akustik GmbH & Co. KG  
Untermatten 12-14  
79282 Ballrechten-Dottingen  
Germany

Tel.: +49 (0) 7634-5610-75  
Fax: +49 (0) 7634-5610-80  
E-Mail: [mailto@in-akustik.de](mailto:mailto@in-akustik.de)  
Web: [www.in-akustik.de](http://www.in-akustik.de)