

SOUND IMAGES



inakustik

KABEL | LAUTSPRECHER | MUSIK


THE KEY TO OUR SUCCESS








Of course, we were not the ones to invent cable. But we are really rather proud of having made the best out of it. Seriously though, it is not easy to find a better cable that transmits sound signals clearer, more precisely and purer than, for instance, our LS-A1.

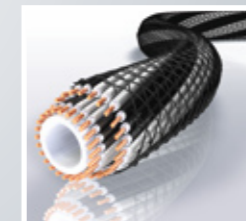
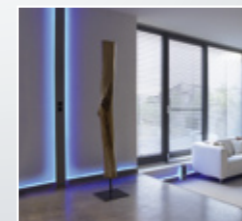
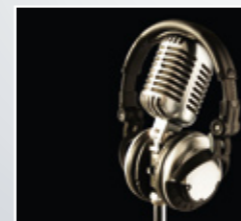
The passion and love we have invested in developing and producing this cable also extends to all our other products. No wonder, because it is also the basis on which we took

up the fight against the mediocrity of sound and picture transmission when we first started at in-akustik more than 30 years ago now.

Since then we have achieved a lot. Not just for the connoisseurs of sound and pictures but also for all those who are tired of mediocrity. Outstanding quality with excellent value for money is what makes in-akustik attractive for everyone.



HOME VIDEO 	6	74 	INSTALLATION
SPEAKER CABLE 	32	86 	MULTIMEDIA
HOME HIFI 	52	90 	CAR HIFI
POWER SUPPLY 	68	96	TV CABLE CHANNEL TV WALL BRACKET
		97	MUSIC & MEDIA
		98	PRODUCT OVERVIEW



IN-AKUSTIK – FOR THE SENSES.

in-akustik has been committed to pure sound and sharp pictures for more than 30 years. With our CD and DVD labels, as well as with our own cables. AmbienTech speaker walls, cable runs and the LED light concept are our latest developments which interpret sound and vision as a living concept. For more information, go to www.in-akustik.de

MADE IN GERMANY

The key to our success? The origin of our cable? That is the production of our speaker cables in our very own cable plant. In Germany. And the assembling most of our Reference and Excellence cables here in our plant: in Ballrechten-Dottingen. Quality – made in Germany.



QUALITY LEVELS

First-rate materials, optimum performance – our products offer all this. And that is also reflected in the quality. There is always a little bit more with each level.

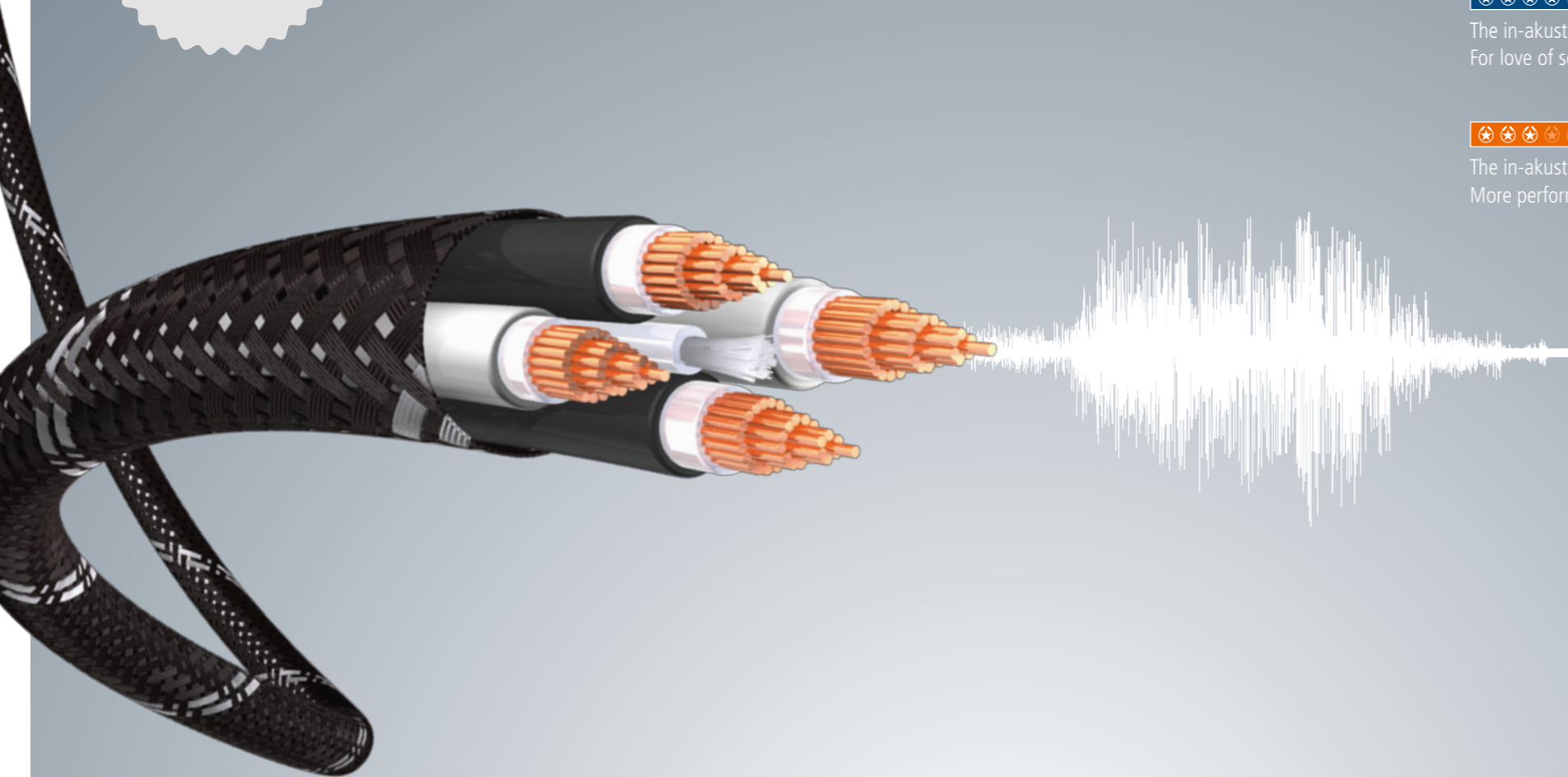
From Star to Premium and Excellence to our ne plus ultra from the Reference class which is a standard for all others, we have finer, more sophisticated and intricate cable technology for every level. What do you get? More sound. More sharpness. Noticeably more passion. And above all, more pleasure.

★★★★★ REFERENCE – THE BENCHMARK FOR PICTURE AND SOUND – SIMPLY CAN'T BEAT IT!
The in-akustik class for perfectionists. The benchmark for an uncompromising sound and picture experience. World-wide leader in price-performance ratio. Goes right under your skin.

★★★★☆ EXCELLENCE – FOR THE LOVERS OF PERFECT PICTURE AND SOUND EXPERIENCES.
The in-akustik class for upmarket demands. Selected materials, the best workmanship. With passion, for high-end sound and picture enjoyment.

★★★★☆ PREMIUM – PICTURE AND SOUND FOR ADVANCED USERS.
The in-akustik class for finest technology. Extracts the best from the hi-fi system. For love of sound and picture performance.

★★★★☆ STAR – THE BEST GATEWAY TO THE WORLD OF PICTURE AND SOUND.
The in-akustik class for aspiring beginners. Always suitable. More performance for low prices. A necessity for luxury of sound and picture.





POWER SUPPLY

Power supplies are the lungs for high-end enjoyment. Power supply cables are increasingly used to carry data. High frequency signals are superimposed on the mains voltage. Normal power cables also function as aerials, picking up the radio frequencies broadcast by mobile phones or PCs. These signals then manifest themselves as interference in the hardware. This is compounded by mains voltage variations and transfer resistances, which impair the power of hi-fi equipment during dynamic peaks. Our power bars, sockets, mains and power cables deliver a clean and stable supply of power from the fusebox to your hifi system.

- POWER BAR
- MAINS CABLE
- POWER CABLE
- MAINS PLUG
- SOCKETS

70
71
71
72
73

■ POWER BARS AC-2502-P8 | AC-1502-P6

The Reference power bars filter unwanted interference out of the power supply, without introducing additional source impedance. Thanks to the use of high-quality materials and excellent workmanship, they provide maximum dynamics, even for extreme loads. Their full shielding and special filters prevent radio frequencies from being received. Solid power bars in the power strips distribute the power homogeneously to all outlets.

KEY FEATURES

- ⊕ Fully-shielded metal housing
- ⊕ Foil shielding
- ⊕ Ferrite filter in the plug (in-plug filter); 2Y filter in the strip
- ⊕ Power bars (8 mm²) for homogenous power distribution
- ⊕ Phase markings on the plugs and sockets
- ⊕ Conforms to VDE and CE

ADDITIONAL AC-2502-P8 PRODUCT DATA

- 3 x 2.5 mm²
- 8 connections
- Lengths: 1.5 m; 3.0 m
- Child protection
- PE network jacket
- Includes phase tester

ADDITIONAL A-1502-P6 PRODUCT DATA

- 3 x 1.5 mm²
- 6 connections
- Lengths: 1.5 m; 3.0 m
- Child protection
- PE network jacket
- Includes phase tester

■ MAINS CABLE AC-1502 | AC-1502F | AC-2502F

The Reference mains cable ensures a stable and clean supply of power. The shielding provides reliable protection from interference and the innovative in-plug filter provides additional decoupling for the equipment.

KEY FEATURES

- ⊕ Additional shielding wire (CU tin-plated; 1 x 1.5 mm²)
- ⊕ Phase markings
- ⊕ Foil shielding
- ⊕ Ferrite filter in the plug (in-plug filter)
- ⊕ PE network jacket
- ⊕ Conforms to VDE and CE

■ POWER CABLE AC-2502M

The power cable for fixed installations with dense, braided shielding provides protection from radio frequencies right from the fusebox. A direct connection from the fusebox to the power outlet, without diversions or additional loads improves the dynamics.

KEY FEATURES

- ⊕ (3 x 2.5 mm²)
- ⊕ Dense, braided shielding
- ⊕ Filler wire for connecting the shielding
- ⊕ Solid conductors
- ⊕ Power cable for fixed installations
- ⊕ Conforms to VDE and CE



ADDITIONAL AC-2502F PRODUCT DATA

- 3 x 2.5 mm² cable
- Unit: 10 m ring; 20 m ring; 50 m ring



ADDITIONAL AC-1502F PRODUCT DATA

- 3 x 1.5 mm² cable
- Unit: 10 m ring; 20 m ring



ADDITIONAL AC-1502 PRODUCT DATA

- Lengths: 1.0 m–5.0 m
- 3 x 1.5 mm² cable
- Schuko -> non-heating device plug
- In-plug filter in Schuko plug

CONNECTIONS



■ SCHUKO AC-P1 PLUG

KEY FEATURES

- ⊕ High-end Schuko plug
- ⊕ Solid screw connections
- ⊕ Solid design
- ⊕ Includes installation kit and ferrite filter (in-plug filter)
- ⊕ Suitable for AC-1502F & AC-2502F
- ⊕ Conforms to VDE and CE



■ AC-P2 NON-HEATING DEVICE PLUG

KEY FEATURES

- ⊕ High-end non-heating device plug
- ⊕ Solid screw connections
- ⊕ Solid contacts
- ⊕ Includes installation material
- ⊕ Suitable for AC-1502F
- ⊕ Conforms to VDE and CE

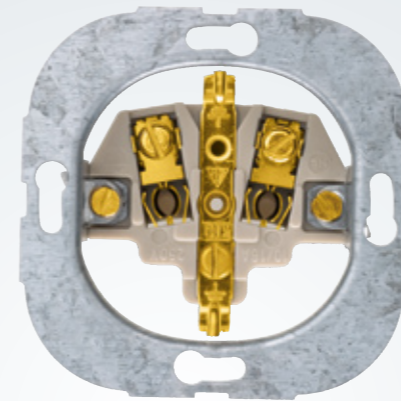


■ SCHUKO AC-S1 SOCKET

The Reference Schuko AC-S1 socket has solid screw terminals and large, gold-plated contact surfaces. This reduces the transmission resistance and ensures more dynamism.

KEY FEATURES

- ⊕ High-end Schuko socket
- ⊕ Solid screw connections
- ⊕ Gold-plated contacts
- ⊕ High contact pressure with double contact spring
- ⊕ Minimum transmission resistance for maximum sound performance
- ⊕ Conforms to VDE and CE



■ AC-E1 FLUSH MOUNTING SOCKET AC-E2 FLUSH MOUNTING SOCKET

The Reference flush mounting sockets keep the power free from interference using a vacuum-metallised aluminium shielding.



ADDITIONAL AC-E1 PRODUCT DATA

- Diameter: 60 mm; depth: 41 mm
- Shielded
- Includes connection material

ADDITIONAL AC-E2 PRODUCT DATA

- Diameter: 60 mm; depth: 47 mm
- Shielded
- Includes connection material

APPLICATION

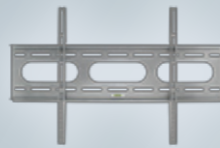


TV CABLE CHANNEL & LED LIGHT KIT

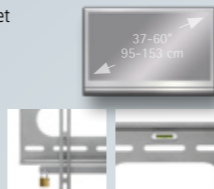
Flat screens are captivating with their simple designs and clear lines. They fit perfectly into a living room ambience. If it weren't for the cables hanging on the wall. An inconspicuous and visually pleasing solution to this problem is the AmbienTrack TV cable channel from in-akustik.



AMBIENTECH TV WALL BRACKET NO. 1

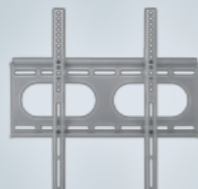


- Universal plasma/LCD wall bracket
- Fulfills the VESA standard
- TV size: 37 – 60"/95 – 153 cm
- TV weight: 75 kg/165 lbs
- With spirit level
- Lockable
- Super flat design
- Incl. installation instructions
- Incl. installation kit
- Plug & Play installation



75 kg
165 lbs

AMBIENTECH TV WALL BRACKET NO. 2



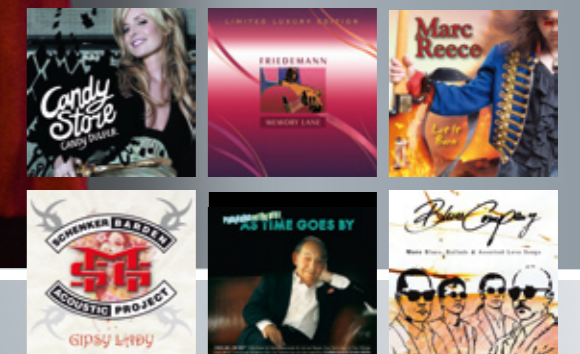
- Universal plasma/LCD wall bracket
- Fulfills the VESA standard
- TV size: 23 – 37"/59 – 95 cm
- TV weight: 50 kg/110 lbs
- Lockable
- Super flat design
- Incl. installation instructions
- Incl. installation kit
- Plug & Play installation



50 kg
110 lbs



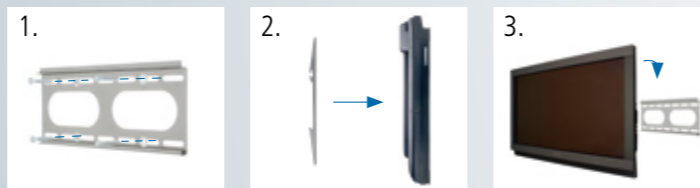
YOU CAN FIND THESE AND MORE THAN 4000 OTHER TRACKS IN OUR RANGE:



ADDITIONAL COLOUR VARIATIONS



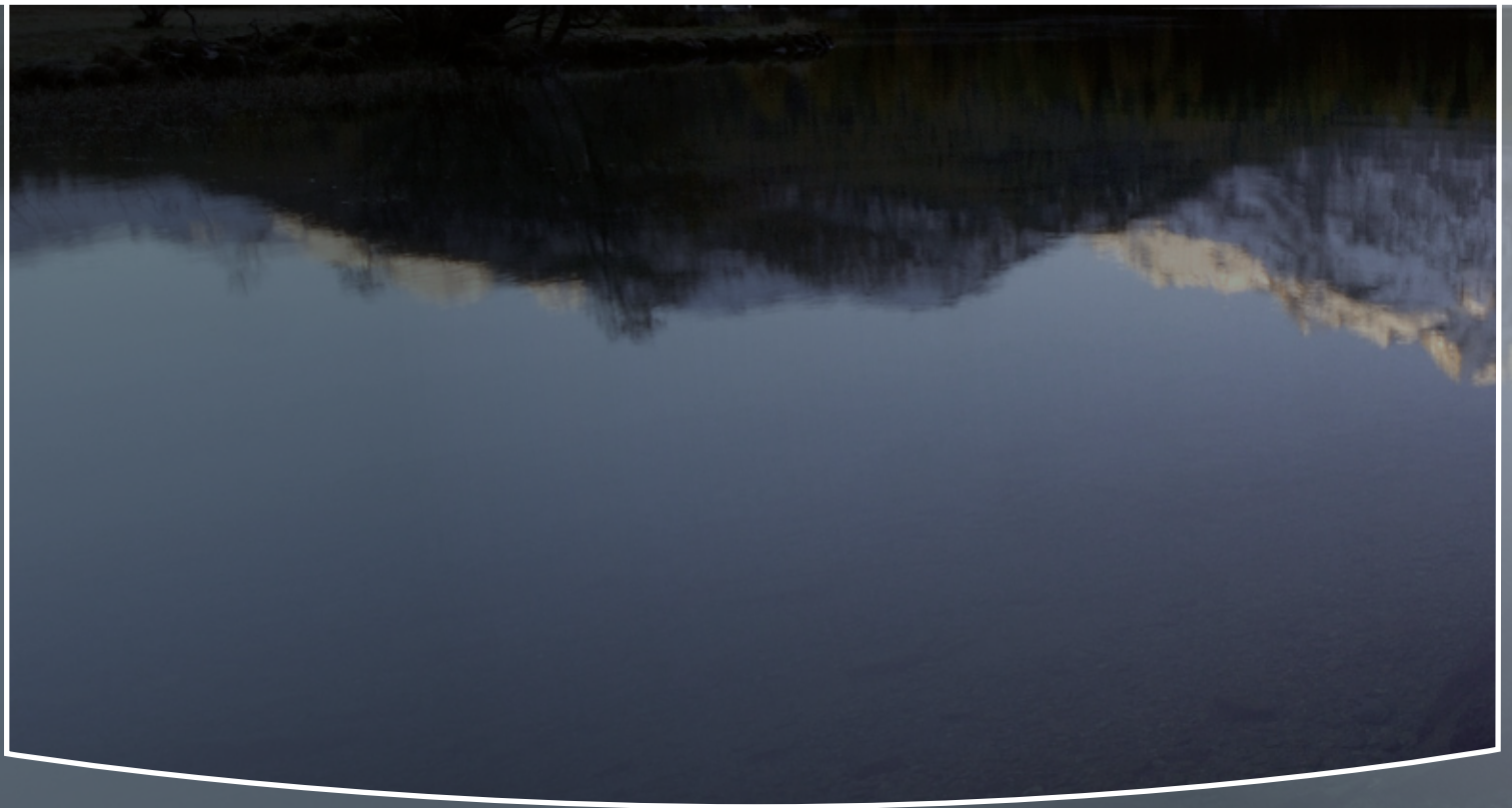
PLUG & PLAY INSTALLATION



MUSIC AND MEDIA

Whether it is jazz, blues, singer/songwriter, rock, pop or classical – we have it all. Everything? Well, not quite everything. But a bit of everything: an exquisite selection of outstanding composers, singers and bands. Studio and live recordings that make your ear drums tremor and your emotions run wild or a popular cult series from the television. To watch and listen to on CD, DVD, Blu-ray, LP or SACD.

Visit our website at www.in-akustik.de



in-akustik GmbH & Co. KG
Untermatten 12-14
79282 Ballrechten-Dottingen
Germany

Tel.: +49 (0) 7634-5610-75
Fax: +49 (0) 7634-5610-80
E-Mail: mailto@in-akustik.de
Web: www.in-akustik.de